

## LPLC Columns and Accessories

### Sigma-Aldrich Columns and Accessories



P000491

#### Sigma Luer-Lock Glass LC Columns

##### Borosilicate glass columns

- Luer-Lock inlet and outlet fittings
- Rated for maximum pressure of 15psi (1 bar)
- Fixed polypropylene end caps, polyethylene bed supports

About Polypropylene Components Polypropylene resists strong and weak acids, bases, and alcohols. It has limited resistance to aliphatic hydrocarbons, aldehydes, esters, and ketones, and is not recommended for use with aromatic or halogenated hydrocarbons or strong oxidizing agents.

Non-jacketed. For other styles, refer to the Sigma catalog.

COLUMN ID x BED LENGTH (cm)	VOLUME (mL)	QTY.	CAT. NO.	PRICE
0.7 x 10	4	1	C3669-1EA	
		10	C3669-10EA	
1.0 x 10	8	1	C3794-1EA	
		10	C3794-10EA	
1.0 x 20	16	1	C3919-1EA	
		10	C3919-10EA	
1.5 x 10	18	1	C4169-1EA	
		5	C4169-5EA	
1.5 x 30	53	1	C4294-1EA	
		5	C4294-5EA	
2.5 x 10	49	1	C4669-1EA	
		5	C4669-5EA	
2.5 x 20	98	1	C4794-1EA	
		5	C4794-5EA	
2.5 x 50	245	1	C4919-1EA	
		3	C4919-3EA	

#### Flow Adapter

Combine one adapter with a Sigma Luer-Lock column to make a column with an adjustable bed volume. PTFE eluant cannula, polyacetal body, Viton O-ring seal and 20µm polyethylene bed support. One replacement bed support included with each adapter.

COLUMN ID (cm)	QTY.	CAT. NO.	PRICE
1.0	1	F8267-1EA	
1.5	1	F8392-1EA	
2.5	1	F8517-1EA	

#### Reservoir

Tapered for leak-free seal.

COLUMN ID (cm)	VOLUME (mL)	QTY.	CAT. NO.	PRICE
<b>GLASS</b>				
0.7 - 1.5	500	1	R5508-1EA	
0.7 - 1.5	1000	1	R5633-1EA	
<b>POLYPROPYLENE</b>				
0.7 - 1.5	100	12	R5758-12EA	
2.5	700	5	R5883-5EA	

#### Replacement Bed Supports (Polypropylene)

For use with flow adapter only.

COLUMN ID (cm)	QTY.	CAT. NO.	PRICE
1.0	10	B9775-10EA	
1.5	10	B9900-10EA	
2.5	10	B0151-10EA	

#### Other Accessories

Luer-Lock Stopcocks -Polycarbonate/acetal on-off control, female Luer-Lock inlet and male Luer-Lock outlet ports. Package of 10.

3-Way Luer-Lock Stopcocks -Nylon. 3-way control with female Luer-Lock inlet and male Luer-Lock outlet ports. Package of 10.

DESCRIPTION	QTY.	CAT. NO.	PRICE
<b>STOPCOCKS</b>			
Luer-Lock	10	S7396-10EA	
Luer-Lock, 3-Way	10	S7521-10EA	
<b>ADAPTERS</b>			
Luer-Lock to 0.038"ID PTFE tubing (1/16"OD) 5'/1.5m of tubing with integral CTFE female Luer-Lock fitting.			
	5	A7552-5EA	
Luer-Lock to 1/4"-28 threads, polypropylene			
	10	A7677-10EA	
Luer-Lock to 1/16" ID tubing, polypropylene			
	10	A7427-10EA	

Order: 1.800.325.3010 Technical Service: 1.800.304.3049 Web: www.sigma-aldrich.com/supelco

Resins & Media

SUPELCO

## LPLC Columns and Accessories

### Omnifit Columns & Accessories



Omnifit Column Kit

P000492

#### Omnifit Columns and Column Kits <sup>1</sup>

Omnifit glass columns are designed to be packed with resin-based LC packings of 20-200 $\mu$ m particle size. They are constructed of inert materials and can be operated at medium pressures.

Each Omnifit column is made from a continuous piece of precision-bore borosilicate glass, fashioned with extra-deep threaded ends and strain-free fittings. Specially designed scalloped endcaps virtually eliminate rolling and give you an improved grip when you are opening or closing the column. The endpieces also minimize dead volume and reduce turbulence in solvent flow. A 25 $\mu$ m polyethylene frit mounted in the endpiece distributes the sample evenly over the surface of the packing bed, reducing sample dispersion before the sample enters the column.

Kits include the glass column, 2 fixed-length PTFE endfittings with porous 25 $\mu$ m polyethylene frits, Viton O-rings, 2 gripper fittings, 2 support rods for mounting the column, one coupling body, and 2m of 1/16" OD x 0.8mm ID PTFE tubing. Order adjustable endfittings separately.

COLUMN LENGTH x ID (mm)	BED VOL. (mL)	CAT. NO.	PRICE
<b>OMNIFIT COLUMN KITS (INCLUDES ENDFITTINGS)</b>			
50 x 10	1.7	56000	
100 x 10	5.6	56001	
150 x 10	9.5	56002	
250 x 10	17.4	56003	
500 x 10	37.1	56004	
100 x 15	12	56005	
150 x 15	21	56006	
250 x 15	39	56007	
500 x 15	83	56008-U	
100 x 25	35	56009-U	
150 x 25	60	56010	
250 x 25	110	56011-U	
500 x 25	240	56012	
1000 x 25	494	56013-U	
<b>PACKING RESERVOIRS/COLUMNS (NO ENDFITTINGS)</b>			
50 x 10		56014-U	
100 x 10		56015	
150 x 10		56016	
250 x 10		56017	
500 x 10		56018	
150 x 15		56020-U	
250 x 15		56021	
500 x 15		56022	
100 x 25		56023	
150 x 25		56024	
250 x 25		56025-U	
500 x 25		56026	

#### PRESSURE RATINGS FOR OMNIFIT COLUMNS

10mm ID:	600psi (42 bar)
15mm ID:	300psi (20 bar)
25mm ID:	150psi (10 bar)

#### Accessories

COLUMN LENGTH	CAT. NO.	PRICE
<b>ADJUSTABLE ENDFITTINGS</b>		
Adjustable		
10mm	56099	
15mm	56112-U	
25mm	56125	
Fixed <sup>4</sup>		
10mm	56101	
15mm	56114-U	
25mm	56127	
<b>COLUMN CONNECTOR<sup>3</sup></b>		
10mm	56100-U	
15mm	56113	
25mm	56126	
<b>SUPPORT ROD</b>		
10mm	56143	
25mm	56145-U	
<b>O-RINGS (for sealing between column and end piece)</b>		
Viton (pk. of 10)		
15mm	56122	
Chemraz (each)		
10mm	56111-U	
25mm	56137	
<b>FRITS (PK. OF 20)</b>		
5 $\mu$ m, PTFE		
10mm	56108	
15mm	56121	
25mm	56134	
10 $\mu$ m, PTFE		
10mm	56107	
15mm	56120-U	
25 $\mu$ m, PTFE		
10mm	56103	
25mm	56129	
25 $\mu$ m, Polyethylene		
10mm	56102	
40 $\mu$ m, PTFE		
10mm	56105-U	
15mm	56118	
25mm	56131	
70 $\mu$ m, PTFE		
10mm	56106	
25mm	56132	
100 $\mu$ m, PTFE		
10mm	56104	
25mm	56130-U	

<sup>1</sup> For aqueous mobile phases. Other diameters available as custom orders.

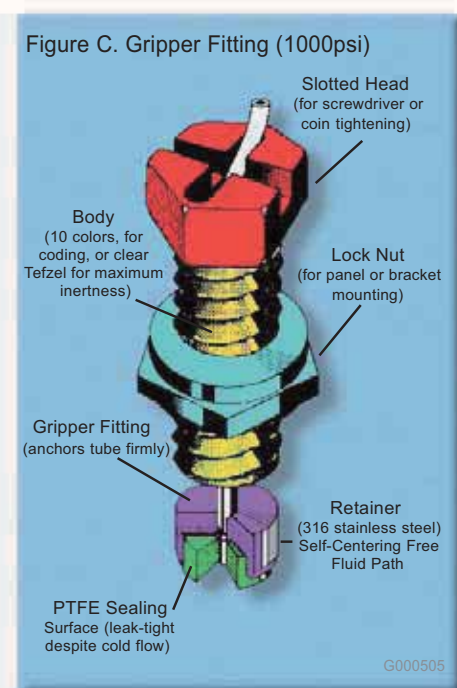
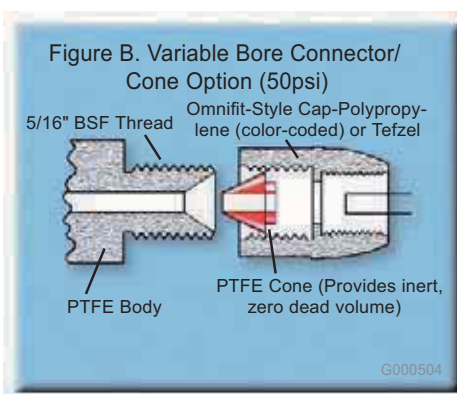
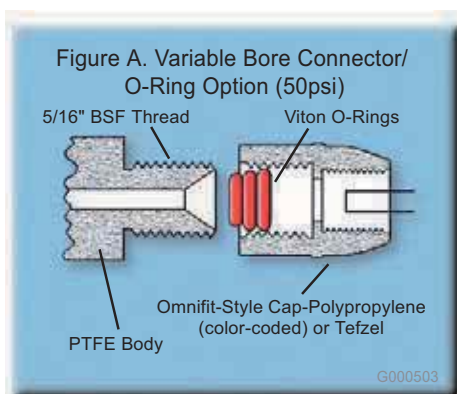
<sup>2</sup> 8cm maximum adjustment.

<sup>3</sup> Joins 2 columns of same diameter, 50psi max.

<sup>4</sup> Includes Omnifit-style 1/4-28 cap fittings w/Viton O-ring for column to endfitting seal, Viton O-rings for tubing connector, and 0.5mm bore void-filling PTFE cone.

## LPLC Columns and Accessories

### Omnifit Accessories



Information and graphics courtesy of Omnifit.

#### Connector Options

Variable bore connectors offer a choice of two-way, three-way, and multi-port Omnifit connectors. Most of these connectors are also available with valved ports. These fittings offer the unique advantage of producing a very low dead volume connection with tubing of various diameters, through an O-ring compression system (Figure A), a cone over tubing system (Figure B), or a void-filling cone with a standard gripper, Omnifit, or flangeless tube connector on a threaded 1/4"-28 fitting. All three options use a 1/4"-28 tube endfitting (nut). The Teflon valve and connector bodies have 1.5mm flow passages and are supplied with chemical-resistant Tefzel stems.

**O-ring option:** Up to 3 Viton O-rings are compressed into the body which holds the tube tightly and forms the seal. The O-rings allow maximum flexibility, because they seal on rigid wall tubing of 4mm-11mm diameter (standard variable bore). This is particularly advantageous for changing fluid lines of differing dimensions. Viton is inert to most acids but is attacked by aldehydes and ketones. Typical pressure rating: 50psi (3 bar).

**Cone option:** A PTFE cone is matched to the tubing OD. This cone is compressed into the fitting, forming the seal. This option gives an all-PTFE fluid path of very low dead volume. PTFE is resistant to most chemicals, including sulfuric acid, sodium hydroxide, and all organic solvents. Typical pressure rating: 50psi (3 bar).

A gripper fitting (Figure C) is a flangeless tube connection that incorporates a PTFE-faced washer pressed into a 316 stainless steel housing. The fitting provides leak-free connection with minimum disturbance to the fluid path, and allows repeated connections/disconnections without deterioration of the sealing face. A gripper fitting will not compress the tubing if overtightened and does not twist the tubing during connection. Pressure: rated to 1000psi (68 bar). When using a gripper fitting with an Omnifit-style connector, use a 0.5mm bore cone (Cat. No. 56041) to fill the cone area on the connector.

#### Gripper Fittings

Gripper Trial Pack includes 2 tube endfittings (nuts), 2 gripper fittings, coupler, 2m PTFE tubing. Gripper fittings are rated to 1000psi.

DESCRIPTION	CAT. NO.	PRICE
<b>GRIPPER TRIAL PACK</b>		
1/16" (0.8mm ID tubing)	57415-U	
<b>GRIPPER FITTINGS</b>		
1/16" (pk. of 10)	57417	
1/8" (pk. of 10)	57418	

<sup>1</sup> Tube endfittings (nuts) not included.

Order: 1.800.325.3010 Technical Service: 1.800.359.3041 Web: www.sigma-aldrich.com/supelco

Resins & Media

SUPELCO

## LPLC Columns and Accessories

### Omnifit Accessories



#### Accessories Kits

Laboratory Kit includes 2 two-way connectors, universal connector, three-way "T" valve, pack of 1/16" tube endfittings, pack of 1/16" gripper fittings, three-way "T" connector, two-way valve, distribution valve, 2 two-way couplings, 20m x 0.8mm ID PTFE tubing.

Valve Kit includes variable large connector, two-way connector, universal connector, two-way connector with valve.

DESCRIPTION	CAT. NO.	PRICE
Laboratory Kit	56028-U	
Valve Kit	56029-U	



#### Variable Bore Connectors

DESCRIPTION	CAT. NO.	PRICE
<b>STANDARD BORE (1.5mm BORE, 1/16" CONES)</b>		
O-rings and PTFE cones included.		
Two-Way Connectors (pk. of 3)	56030	
Two-Way Connectors (pk. of 20)	56031	
Three-Way "T" Connector	56032	
Two-Way Valve Connectors (pk. of 2)	56033	
Three-Way Valve Connector	56034	
<b>SMALL BORE (0.8mm BORE, 1/32" CONES)</b>		
PTFE cones included.		
Two-Way Connectors (pk. of 3)	56138	
Two-Way Connectors (pk. of 20)	56139	
Three-Way "T" Connector	56140-U	
Two-Way Valve Connectors (pk. of 2)	56141	
Three-Way Valve Connector	56142	



#### Caps and Cones for Variable Bore Connectors

DESCRIPTION	CAT. NO.	PRICE
<b>CAPS FOR CONNECTORS</b>		
Mixed Colors (pk. of 10)	56035	
<b>CONES, PTFE (PK. OF 4)</b>		
1/32" bore	56036	
1/16" bore	56037	
3/32" bore	56038	
1/8" bore	56039-U	
0.5mm bore	56041	
1.0mm bore	56042	
1.5mm bore	56043-U	
2.5mm bore	56045	
3.0mm bore	56046	
3.5mm bore	56047	
solid (plug)	56049	



#### Tube Couplers (Female Unions)

Kits include 5 couplers, 10 tube endfittings, and 10 gripper fittings.

DESCRIPTION	CAT. NO.	PRICE
<b>TUBE COUPLER/GRIPPER KITS</b>		
1/16" Tefzel	56055-U	
1/8" Tefzel	56057-U	
<b>TUBE COUPLERS (PK. OF 10)</b>		
1/4-28 to 1/4-28, Tefzel	56051	



## LPLC Columns and Accessories

### Omnifit, Upchurch Accessories

58685



#### Flangeless Fittings (Omnifit)

Compatible with all fittings having 1/4-28 threads. Use in place of any flange-type fitting used with 1/16" or 1/8" OD plastic tubing. Each inert fitting consists of a Delrin nut and Tefzel ferrule. Use the 1/16" fittings to 1000psi (70kg/cm<sup>2</sup>) or the 1/8" fittings to 500psi (35kg/cm<sup>2</sup>).

DESCRIPTION	CAT. NO.	PRICE
<b>1/16" OD TUBING</b>		
Nut and ferrule (5 each)	58685	
Tefzel ferrule (pk. of 10)	56700-U	
<b>1/8" OD TUBING</b>		
Nut and ferrule (5 each)	58686	
Tefzel ferrule (pk. of 10)	56701	



#### Flangeless Fittings Kit (Omnifit)

Components	Description and (Quantity)	
Flangeless ferrules	1/16" (10)	1/8" (10)
Flangeless nuts	1/16" (10)	1/8" (10)
Unions with fittings	1/16" (2)	1/8" (2)
Tee with fittings	1/16" (1)	1/8" (1)
Cross with fittings	1/16" (1)	1/8" (1)
Unions	metric M6 (2)	standard 1/4-28 (2)
Luer fittings	female (2)	male (2)
Metric adapters	1/4-28 to M6 (2)	

DESCRIPTION	CAT. NO.	PRICE
Flangeless Fittings Kit	58630	

#### Flangeless Nut Extender Tool (Upchurch)

- Designed for standard head nuts
- Tightens nut in hard-to-reach places.



DESCRIPTION	CAT. NO.	PRICE
Flangeless Nut Extender Tool	55013-U	



#### Super Flangeless Fittings (Upchurch)

Super Flangeless Fittings are designed to provide significant improvements over standard Flangeless Fittings, holding up to 7000psi (483 bar). The lock ring offers constant, uniform compression on the ferrule while operating as a bearing against the nut. This design allows the nut to spin freely against the ferrule system preventing the tubing from twisting during the tightening process. Packs of 10.

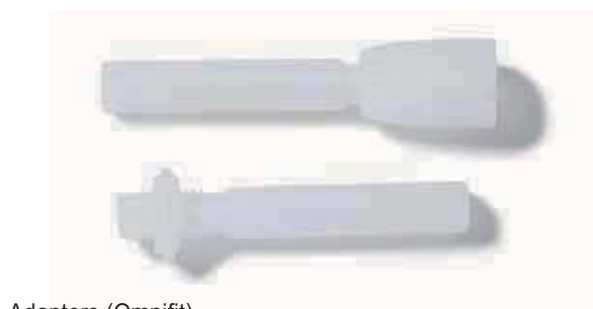
DESCRIPTION	CAT. NO.	PRICE
PEEK Ferrules for 1/16"OD tubing	55008-U	
PEEK Ferrules for 1/8"OD tubing	55009-U	
PEEK Nut (1/4"-28) for 1/16"OD tubing	55012-U	
PEEK Nut (1/4"-28) for 1/8"OD tubing	55083-U	
SS Frit (2µm) in PEEK Ferrules for 1/16"OD tubing, 5,000psi max.	55014-U	
SS Frit (2µm) in PEEK Ferrules for 1/8"OD tubing, 1,400psi max.	55015-U	



#### Sealtight Fittings (Upchurch)

Fittings for 1/16"OD tubing. Packs of 10.

DESCRIPTION	CAT. NO.	PRICE
Short Nut, PEEK 10-32, Ferrules	55002-U	
Long Nut, PEEK 10-32, Ferrules	55003-U	
Long Nut, PEEK M-6, Ferrules	55004-U	
Extra Long Nut, PEEK 10-32, Ferrules	55006-U	
PEEK Ferrules	55007-U	



#### Adapters (Omnifit)

DESCRIPTION	CAT. NO.	PRICE
To connect an Omnifit connector or column endfitting and a Luer fitting or soft tubing		
Omnifit cap to male Luer	56085	
Omnifit cap to female Luer	56087	
Omnifit cap to 1/4" OD pipe stem	56090	
To connect a 1/4-28 female fitting and a Luer fitting or soft tubing		
1/4-28 male to male Luer	56086	
1/4-28 male to 1/4" OD pipe stem	56091	
1/4-28 male to 1/8" OD pipe stem	56093	

Order: 1.800.325.3010 Technical Service: 1.800.359.3041 Web: [www.sigma-aldrich.com/supelco](http://www.sigma-aldrich.com/supelco)

Resins & Media

SUPELCO

## LPLC Columns and Accessories

### Omnifit, Upchurch Accessories



#### Omnifit 1/4-28 Tube Endfittings (Nuts)

Use with gripper fittings. Each endfitting includes a lock nut for panel mounting. Pack of 10.

DESCRIPTION	CAT. NO.	PRICE
1/16" OD TUBING		
Tefzel	56069	
1/8" OD TUBING		
Polypropylene, Mixed Colors <sup>1</sup>	56080-U	
Tefzel	56081	

<sup>1</sup>Also available in pk. of 10 of same color – please inquire.

#### Omnifit Plugs

Use to close 1/4-28 or Luer connection. Polypropylene. Pack of 2.



DESCRIPTION	CAT. NO.	PRICE
For male Luer	56083	
For female Luer	56084	

#### Omnifit Septum Injectors

Enable you to use a syringe to make injections onto a low pressure LPLC system. Both injectors have an Omnifit-style connector for the inlet.

DESCRIPTION	CAT. NO.	PRICE
Injector, 1/4-28 outlet <sup>2</sup>	56096	
Injector, Omnifit variable connector outlet <sup>3</sup>	56097	

<sup>2</sup> Directly connects to Omnifit column endfitting.

<sup>3</sup> Connects in line.



#### Fittings and Adapters (Upchurch)

DESCRIPTION	CAT. NO.	PRICE
<b>FITTINGS</b>		
Flangeless Nut, M6 for 1/16" tubing (pk. of 10)	55064	
		
(Order ferrules separately - Cat. No. 56700-U, previous page)		
<b>LUER ADAPTERS</b>		
Male Luer to Male 1/4-28, Tefzel (each)	55065-U	
		
Male Luer to Female 1/4-28, PEEK (each)	55072	
		
Female Luer to Female 1/4-28, Tefzel (each)	55066	
		
Female Luer to Female 1/4-28, PEEK (each)	55075	
		
Male Luer to Female 10-32, PEEK (each)	55073	
		
Female Luer to Female 10-32, PEEK (each)	55076	
		
Female Luer to Male 10-32, Tefzel (each)	55082	
		
Female Luer to Female M6, PEEK (each)	55077	
		
Female M6 to Male Luer, PEEK (each)	55074	
		
<b>OTHER ADAPTERS</b>		
10-32 to Female 1/4-28 Fingertight Fitting 0.020" hole (each)	55070-U	
		
10-32 to Female M6 Fingertight Fitting 0.020" hole (each)	55068	
		
Female 1/4-28 to Male 10-32, PEEK (each)	55071	
		
Female M6 to Male 10-32, PEEK (each)	55069	
		
Female 1/4-28 to Female M6, Tefzel (each)	59259-U	
		

P000471, 482, 487, 483, 472, 473, 485, 484, 475, 488, 476, 477, 478 & 486

## LPLC Columns and Accessories

### Low Pressure Valves, Cheminert Plastic Fittings



Rheodyne Model 5020 Low Pressure Mobile Phase Selection Valve

The Rheodyne Model 5020 fixed volume loop injector is constructed of Teflon and has 0.8mm/0.03" ID flow passages. Operates to 300psi (21kg/cm<sup>2</sup>). Supplied with a 0.5mL sample loop and a female Luer adapter for a Luer tip syringe.

Rheodyne Model 5011 Low Pressure Mobile Phase Selection Valve

Draw the mobile phase you need simply by rotating a switch. This zero dead volume, 7-port, 6-position rotary valve with a common center port operates to 300psi (21kg/cm<sup>2</sup>). Inert 0.8mm ID Teflon tubing ensures contaminant free mobile phases.

DESCRIPTION	CAT. NO.	PRICE
<b>SWITCHING VALVES</b>		
Model 5020 Low Pressure Sample Injection Valve	58814	
Model 5011 Low Pressure Mobile Phase Selection Valve	58829	
Mounting Bracket (for Model 5011 and Model 5020 valves)	57460-U	
<b>SAMPLE LOOPS FOR MODEL 5020 VALVE</b>		
0.1mL	57680-U	
1mL	57683	
5mL	57684	
10mL	57685	



Upchurch Low Pressure Shutoff Valves

- Designed for lower pressure applications
- Biocompatible, all polymer flow path

PEEK or Tefzel valve with 1/4-28 fittings, for pressures up to 1000psi (70kg/cm<sup>2</sup>). Flangeless nuts and ferrules included.

DESCRIPTION	CAT. NO.	PRICE
PEEK, for 1/16" tubing	505757	
PEEK, for 1/8" tubing	56704	
Tefzel (blue), for 1/16" tubing	505765	
Tefzel (blue), for 1/8" tubing	505773	

#### Cheminert Plastic Fittings

For Teflon Tubing

- Chemically inert
- Zero dead volume, small bore
- Autoclavable
- 500psi (35kg/cm<sup>2</sup>) pressure rating



#### Tube Endfittings

Fittings and washers included.

COLOR	QTY.	CAT. NO.	PRICE
<b>FOR 1/16" (1.5mm) OD TUBING</b>			
Mixed colors	12	58705	
<b>FOR 1/8" (3mm) OD TUBING</b>			
Natural	10	58711	
Mixed colors	12	58712	



#### KEL-F Tee Connector

Connects any three pieces of tubing, using 1/4"-28 fittings. Flangeless fittings included.

DESCRIPTION	CAT. NO.	PRICE
Tee for 1/8" tubing (1.5mm bore)	58750-U	
Tee for 1/16" tubing (0.25mm bore)	54989	

## LPLC Columns and Accessories

### Cheminert Plastic Fittings & Tubing



Other Fittings

DESCRIPTION	CAT. NO.	PRICE
<b>POLYPROPYLENE COUPLING</b>		
Couples two pieces of 1/16" or 1/8" tubing, using flanged or flangeless 1/4"-28 threaded fittings, pack of 5	58718	
<b>1/4"-28 THREADED PLUGS</b>		
Plugs, PTFE (pack of 5)	58745	
<b>PIPE ADAPTER</b>		
Adapts 1/4" pipe threads (NPT) to 1/4"-28 threads	54985-U	



Luer Adapters

Female adapter (1/16" ID) connects syringe to 1/4"-28 threaded tubing or adapter. Male adapter connects needle or Luer hub to 1/4"-28 threaded tubing or adapter. Order coupling separately.

DESCRIPTION	CAT. NO.	PRICE
Female Luer adapter	58721	
Male Luer adapter	58722	



Glass-to-Teflon Connector

Joins Teflon tubing (using 1/4"-28 threaded fitting) directly to glassware without coupling. Plain end of connector can be fused into glassware by glass blowing. Includes glass-to-Teflon union and flanged glass nipple. 7mm (1/4") OD x 2mm ID x 3 1/4" (82mm) long.

DESCRIPTION	CAT. NO.	PRICE
Connector	58748	



Tubing Adapters

ADAPTS 1/4"-28 TO:	BORE	CAT. NO.	PRICE
1/4" OD plastic tubing	1.5mm/0.060"	58742	
1/8" OD plastic or SS tubing	1.5mm/0.060"	58743	
1/16" SS tubing (Valco HPLC 10-32 fitting)	0.8mm/0.031"	58744	



Teflon Tubing

Economical, flexible TFE Teflon tubing is ideal for use at pressures up to 500psi (35kg/cm<sup>2</sup>). Use in automatic analyzer, postcolumn reaction, and preparative scale systems; in-stream sampling devices; and when monitoring physiologically important compounds. The maximum recommended operating temperature for TFE Teflon is 200°C, but short term exposure to higher temperatures seldom causes damage.

	DIAMETER		CAT. NO.	PRICE
	OD	ID		
<b>10' (3m) LENGTH</b>				
1/16"/1.58mm	0.8mm/0.031"		58700-U	
1/16"/1.58mm	0.5mm/0.023"		58701	
1/16"/1.58mm	0.3mm/0.012"		58702	
1/8"/3.2mm	1.5mm/0.063"		58703	
<b>50' (15m) LENGTH</b>				
1/16"/1.58mm	0.8mm/0.031"		58696-U	
1/16"/1.58mm	0.5mm/0.023"		58697-U	
1/16"/1.58mm	0.3mm/0.012"		58698-U	
1/8"/3.2mm	1.5mm/0.063"		58699	

FEP Teflon Tubing in 10'/3m Lengths

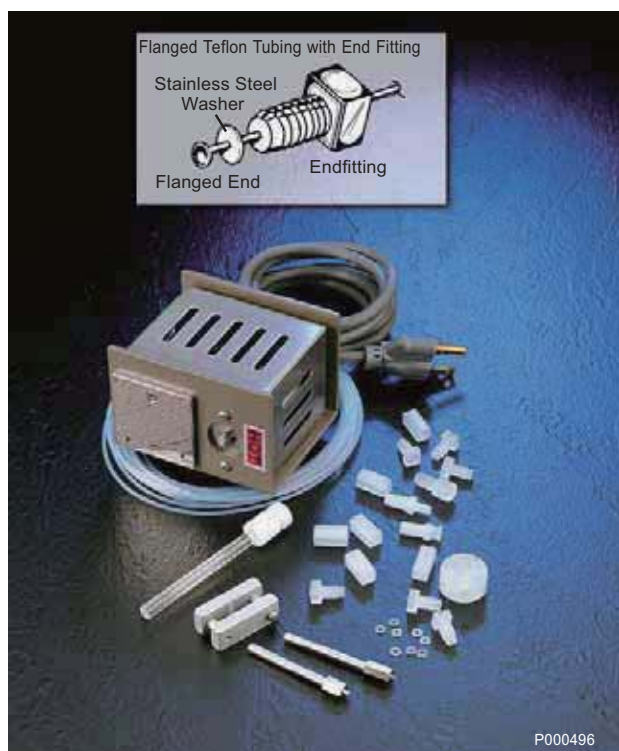
Tubing to connect low, medium, or high pressure pumps to reservoirs.

DESCRIPTION	CAT. NO.	PRICE
<b>TUBING FOR MOST PUMPS</b>		
1/8" OD x 0.0625" ID	58694-U	
<b>TUBING FOR WATERS PUMP</b>		
0.15" OD x 0.118" ID	58695-U	



## LPLC Columns and Accessories

### Tube Flanging Tool



Each tube flanging starter kit contains:

- Flanging tool (115VAC) and accessories
- 20'6m TFE Teflon tubing
- 20 Cheminert tube endfittings
- 20 Stainless steel washers
- 10 Couplings
- Male Luer adapter
- Female Luer adapter
- Plug
- Glass-to-Teflon connector
- Tee

#### Tube Flanging Tool

Assemble your own plastic tubing system.

Our starter kits save you money and provide a variety of the most commonly used fittings.

All flanging tools and kits include a tubing holder, 3 interchangeable flanging tips (3 sizes), and a razor blade. Cheminert tube end fittings can be autoclaved. Both 1/8" and 1/16" fittings have 1/4"-28 threads.

DESCRIPTION	CAT. NO.	PRICE
<b>TUBE FLANGING STARTER KIT</b>		
1/16" OD tubing (0.031" ID)	58754	
1/8" OD tubing (0.063" ID)	58756-U	
<b>FLANGING TOOL</b>		
115VAC, 50/60Hz	58719	
220VAC, 50/60Hz <sup>1</sup>	58720-U	
<b>FLANGING TIPS</b>		
0.028" (for 1/16" OD x 0.010" / 0.020" ID)	54991	
0.040" (for 1/16" OD x 0.030" ID)	54992	
Natural color, pk. of 10		
1/16" OD (1.5mm) x 0.060" ID	58704	
1/8" OD (3mm) x 0.120" ID	58711	
Mixed color, pk. of 12		
1/16" OD (1.5mm) x 0.060" ID	58705	
1/8" OD (3mm) x 0.120" ID	58712	

<sup>1</sup> Does not have a CE mark.

Order: 1.800.325.3010 Technical Service: 1.800.359.3041 Web: [www.sigma-aldrich.com/supelco](http://www.sigma-aldrich.com/supelco)

Resins & Media

SUPELCO

## Ultrafiltration

### Sartorius / Sartobind

#### Centrisart Concentrators

These Sartorius centrifugal membrane-based devices separate components based on molecular size. They are convenient for clarifying, concentrating, or dialysing samples. Centrisart C4 Micro-Concentrators effectively concentrate or exchange buffer in small volume samples (0.4mL). Centrisart C30 units process up to 3mL, and fit into standard laboratory centrifuges designed for 17mm tubes. When you need a protein-free ultrafiltrate, we recommend Centrisart I Centrifugal Ultrafiltration Units.

Their unique design prevents membrane blockage. For 50mL-1000mL samples, use Sartacon-Micro Tangential Flow Ultrafiltration Modules.

#### Centrisart C4G Micro-Concentrators

0.4mL capacity. Maximum force 10,000g. Packs of 25 tubes.

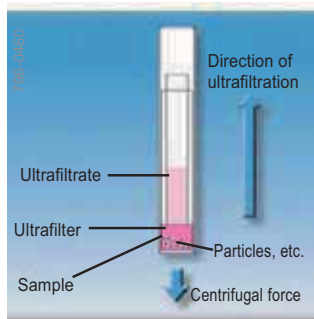
NOMINAL MOL. WT. LIMIT (DALTON)	CAT. NO.	PRICE
20kD	13249C4G	
100kD	13269C4G	
0.2µm Pores	13207C4G	

#### Centrisart C30 Centrifugal Concentrators

3.0mL capacity. Maximum force 5,000g. Packs of 25 tubes.

NOMINAL MOL. WT. LIMIT (DALTON)	CAT. NO.	PRICE
10kD	13239C30	
100kD	13269C30	
0.2µm Pores	13207C30	

#### Centrisart I Centrifugal Ultrafiltration Units



Data courtesy of Sartorius Corp.

Capacity: 2.5mL.  
 Dimensions: 14mm x 93mm long.  
 Filtration Area: 0.79cm<sup>2</sup>.  
 Concentrate Volume: ~100µL.  
 Construction: polystyrene outer tube; cellulose propionate inner tube; cellulose triacetate or polysulfone filters.  
 Typical Performance: 2.5mL sample filtered in 30-90 min.  
 Maximum Force: 2500g (swinging bucket) or 2000g (fixed angle).

Packs of 12 tubes.

NOMINAL MOL. WT. LIMIT (DALTON)	CAT. NO.	PRICE
10kD	13239E	
20kD	13249E	
100kD	13269E	
300kD	13279E	

#### Sartacon-Micro Tangential Flow Ultrafiltration Modules

One per box; boxes of 10 available on request.

NOMINAL MOL. WT. LIMIT (DALTON)	FLOW RATE <sup>1</sup>	CAT. NO.	PRICE
10kD	25	15639001	
100kD	125	15669001	

<sup>1</sup> mL/min water, 28psi inlet pressure.



#### Sartobind Reusable Ion Exchange Membrane Units

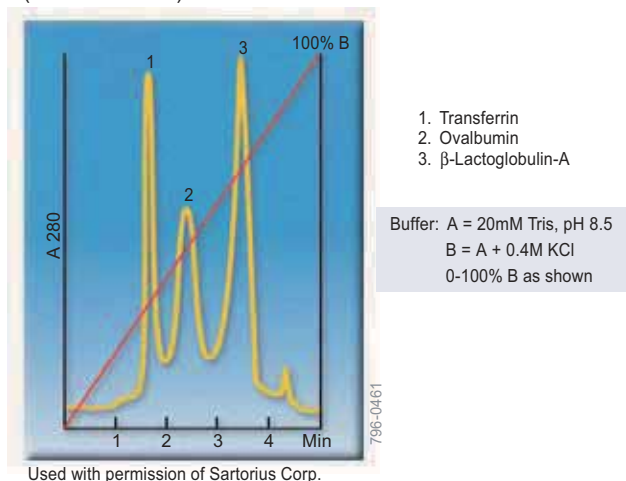
MEMBRANE DESCRIPTION	CAT. NO.	PRICE
15cm <sup>2</sup> (PK. OF 2)		
S-Type Exchanger	S15F	
Q-Type Exchanger	Q15F	
CM-Type Exchanger	C15F	
One S, One Q Unit	SQ15F	
One DEAE, One CM Unit	CD15F	
100cm <sup>2</sup> (EACH)		
S-Type Exchanger	S100F	
Q-Type Exchanger	Q100F	
DEAE-Type Exchanger	D100F	
CM-Type Exchanger	C100F	

#### Sartobind MA5 Membrane Units

Disposable, 5cm<sup>2</sup> surface area. Pack of 15.

MEMBRANE DESCRIPTION	CAT. NO.	PRICE
S-Type Exchanger	S5F	
Q-Type Exchanger	Q5F	
DEAE-Type Exchanger	D5F	
CM-Type Exchanger	C5F	

#### Proteins on a Quaternary Ion Exchange Membrane (Cat. No. Q15F) at a Flow Rate of 50mL/Minute



# Separation MEDIA

## Processing, Testing and Packaging



### Working together...

...we will tailor separation media to meet your specific requirements and optimize the throughput of your processes.

We offer a comprehensive range of processing, testing and packaging capabilities applied to an extensive range of media from most manufacturers.

We also process, test and package client-provided media.

Optimized media preparation, testing and packaging is what we focus on. We have the media, facilities, expertise and documented processes to meet any project requirement.

To learn if separation media, testing and packaging capabilities can enhance your project requirements, contact your Supelco Technical Service representative.

### Separation Media Processing Capabilities

- cleaning
- pre-wetting
- blending
- drying
- ion-exchange
- sanitizing
- sterilizing
- testing (QC, certificate of analysis)
- packaging (mg to Kg; clean room)

### Sources of Media

- Dow
- E. Merck
- Mitsubishi
- Amersham Biosciences
- Sigma-Aldrich
- Tosoh Biosep
- Rohm and Haas

### Media Types

- Alumina
- Carbon
- Dextran
- Florisil
- Polystyrene/Divinylbenzene
- Methacrylate
- Silica

[sigma-aldrich.com/supelco](http://sigma-aldrich.com/supelco)

We are committed to the success of our Customers, Employees and Shareholders through leadership in Life Science, High Technology and Service

 **SUPELCO**