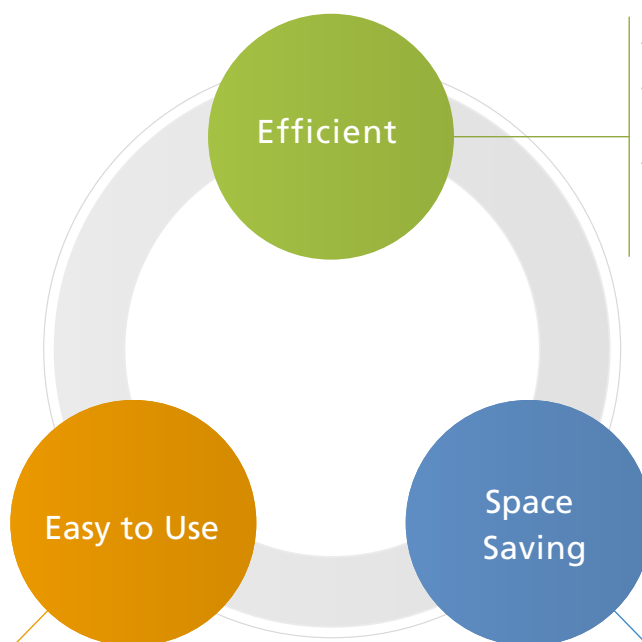


## Improving Preparative Scale Fractionation

# Fraction Collector FRC-40



## Efficient, Easy to Use, Space Saving



- Parameter Simulation ensures pure fractions.
- Parameters can be changed during acquisition to maximize efficiency.
- Up to 4-Channel acquisition ensures that multiple detectors can be used simultaneously.

- Compatible with many racks corresponding to the intended fraction volume.
- Open access design allows a single system to be shared by multiple users.
- Innovative sample rescue function minimizes sample loss when errors occur.

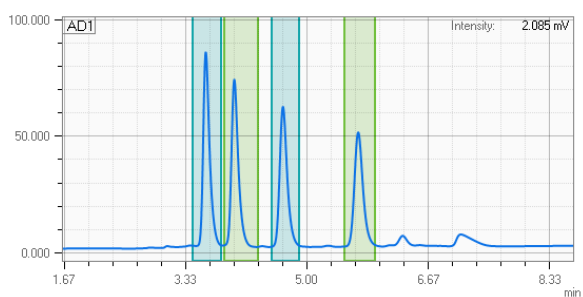
- Up to six fraction collectors can be connected simultaneously.
- Can accommodate up to 3,240 fractions (6 FRC-40's, 10 mm tubes).

Efficient

## Improved Purification Workflow

The FRC-40 incorporates greatly improved fraction simulation. Simply select the peaks of interest and the software dynamically configures parameters that will collect them. (Patent pending)

System parameters such as the pump flow rate and detector settings can be changed during analysis. This allows the user to fractionate during separation development and reduces the potential of wasting precious sample.



Select Peaks to be Collected

Use  
**Peak Detection Parameter**  
 Slope  
 Use Slope  
 Front Slope:   $\mu\text{V}/\text{sec}$   
 Back Slope:   $\mu\text{V}/\text{sec}$   
 Level  
 Use Level  
 Level:   $\mu\text{V}$   
 Slope Disable Level  %  
 Peak Collection Sensitivity:   
 Delay Time (Detector Filter):  sec

Obtain Fractionation Parameters Automatically

Easy to Use

## Simplify Purification Procedures

The FRC-40 is compatible with a variety of MTPs, vials, test tubes and bottles. This allows users to select the fraction size that best fits their analysis and maximizes the number of fractions that can be collected.

Racks are specified through the software, allowing multiple users to collect fractions without the risk of cross-contamination or mix-up.

The open access design of the FRC-40 allows racks to be removed and replaced during analysis. This allows multiple purifications to take place using a single HPLC system.



Standard Fraction Containers\*

10, 18, 25 and 35 mm test tubes  
 96-well MTP/ DWP  
 250, 500, and 1,000 mL bottles

\*Some custom containers may be used. Inquire if interested.

Space Saving

## Uses Bench Space Effectively

The instrument footprint has been optimized to accommodate the maximum number of fractions in the minimum amount of space. Space savings of up to 50% can be achieved compared to competing products.

Up to six FRC-40 units may be multiplexed to a single HPLC system, allowing users to customize the instrument capacity to their needs.

	Maximum Capacity (1 x FRC-40) / (6 x FRC-40)
10mm test tubes	540 / 3,240
18mm test tubes	216 / 1,296
25mm test tubes	108 / 648
35mm test tubes	54 / 324
250 mL bottles	20 / 120
500/1,000 mL bottles	12 / 72
96-well MTP/ DWP	9 / 54



Shimadzu Corporation  
[www.shimadzu.com/an/](http://www.shimadzu.com/an/)

### For Research Use Only. Not for use in diagnostic procedures.

This publication may contain references to products that are not available in your country. Please contact us to check the availability of these products in your country.

Company names, products/service names and logos used in this publication are trademarks and trade names of Shimadzu Corporation, its subsidiaries or its affiliates, whether or not they are used with trademark symbol "TM" or "®".

Third-party trademarks and trade names may be used in this publication to refer to either the entities or their products/services, whether or not they are used with trademark symbol "TM" or "®".

Shimadzu disclaims any proprietary interest in trademarks and trade names other than its own.

The contents of this publication are provided to you "as is" without warranty of any kind, and are subject to change without notice. Shimadzu does not assume any responsibility or liability for any damage, whether direct or indirect, relating to the use of this publication.